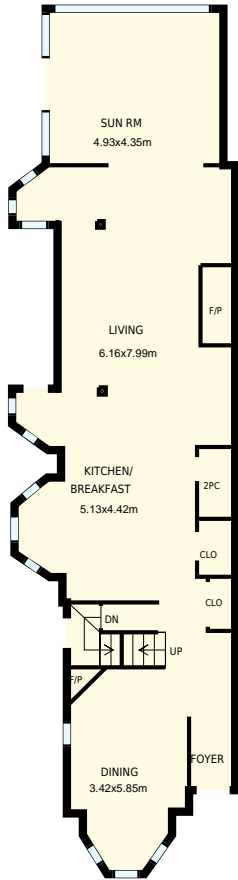


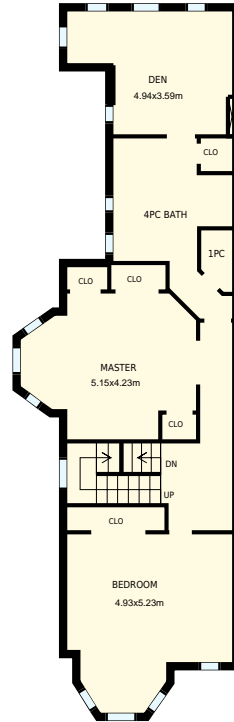


7 Parkview Ave, Toronto, ON

Total Exterior Area Above Grade 295 m²



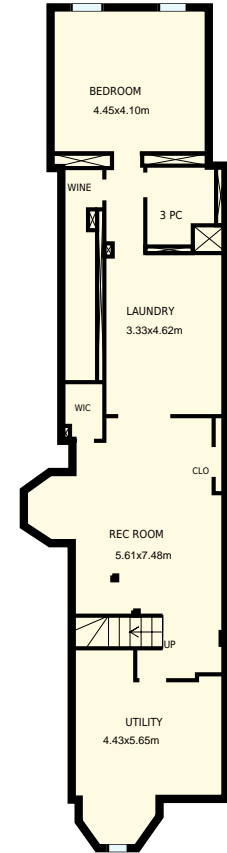
Main floor
Exterior Area 139 m²



2nd floor
Exterior Area 104 m²



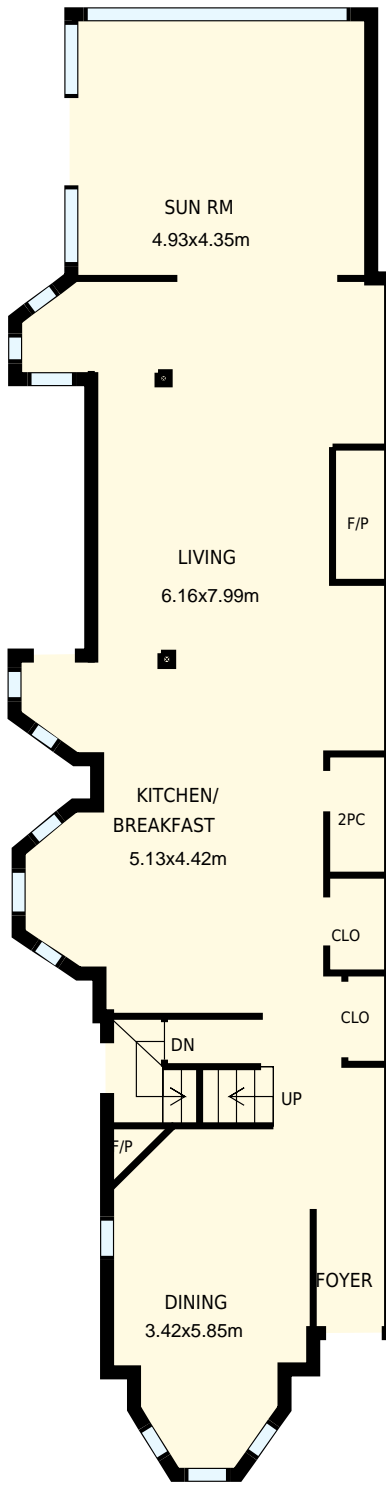
3rd floor
Exterior Area 52 m²



Basement
Exterior Area 121 m²

White regions are excluded from total floor area. All room dimensions and floor areas must be considered approximate and are subject to independent verification. For method of measurement please see <https://youriguide.com/measure/>.

PREPARED FOR: Jen Tripp
Sales Representative
Homelife/Realty One Ltd., Brokerage

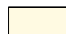


7 Parkview Ave, Toronto, ON

PREPARED FOR:
 Jen Tripp
 Sales Representative
 Homelife/Realty One Ltd., Brokerage

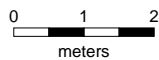
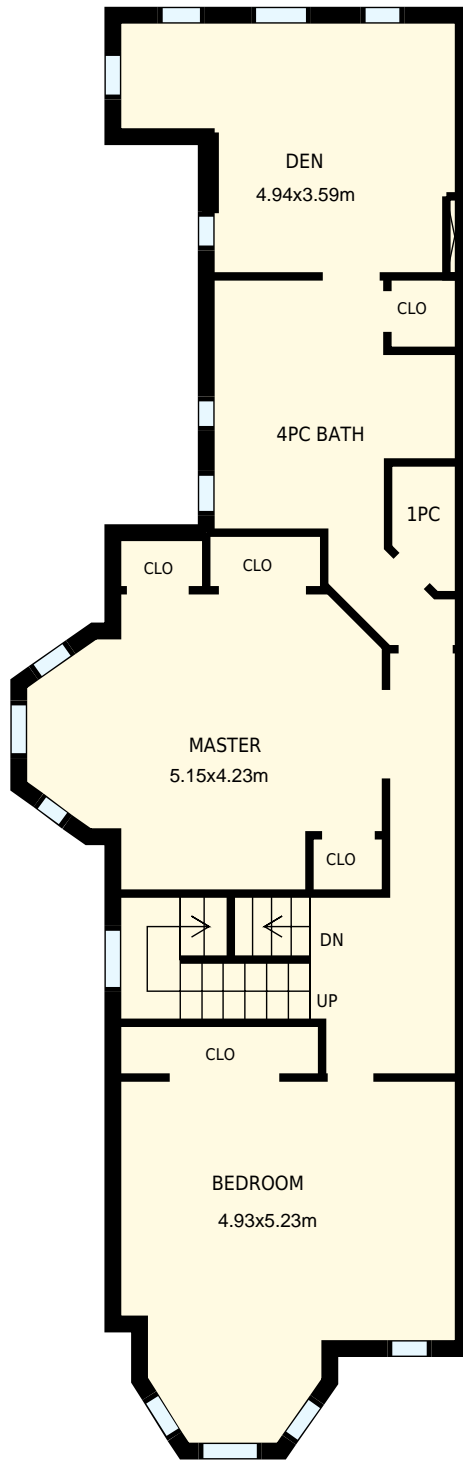
Main floor

Interior Area 123 m²
 Exterior Area 139 m²

 Included Area

PREPARED:
 Sep, 2016

White regions are excluded from total floor area. All room dimensions and floor areas must be considered approximate and are subject to independent verification. For method of measurement please see <https://youriguide.com/measure/>.

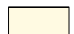


7 Parkview Ave, Toronto, ON

PREPARED FOR:
 Jen Tripp
 Sales Representative
 Homelife/Realty One Ltd., Brokerage

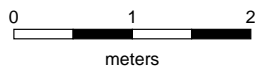
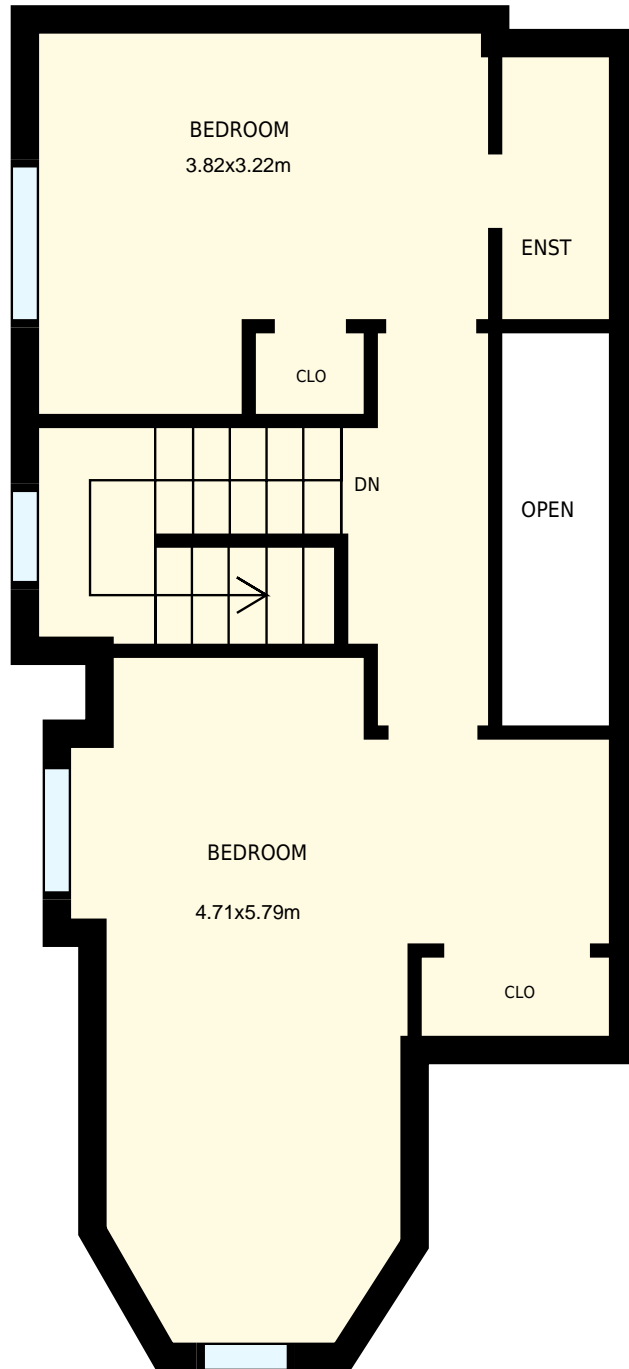
2nd floor

Interior Area 91 m²
 Exterior Area 104 m²

 Included Area

PREPARED:
 Sep, 2016

White regions are excluded from total floor area. All room dimensions and floor areas must be considered approximate and are subject to independent verification. For method of measurement please see <https://youriguide.com/measure/>.




7 Parkview Ave, Toronto, ON

PREPARED FOR:
Jen Tripp
Sales Representative
Homelife/Realty One Ltd., Brokerage

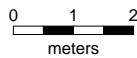
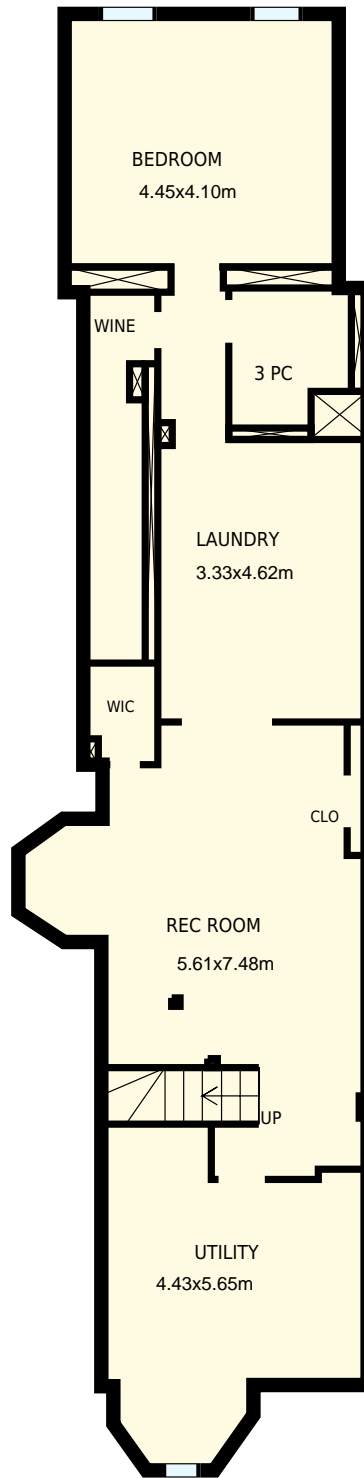
3rd floor

Interior Area 43 m²
Exterior Area 52 m²

 Included Area

PREPARED:
Sep, 2016

White regions are excluded from total floor area. All room dimensions and floor areas must be considered approximate and are subject to independent verification. For method of measurement please see <https://youriguide.com/measure/>.

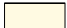


7 Parkview Ave, Toronto, ON

PREPARED FOR:
Jen Tripp
Sales Representative
Homelife/Realty One Ltd., Brokerage

Basement

Interior Area 106 m²
Exterior Area 121 m²

 Included Area

PREPARED:
Sep, 2016

White regions are excluded from total floor area. All room dimensions and floor areas must be considered approximate and are subject to independent verification. For method of measurement please see <https://youriguide.com/measure/>.