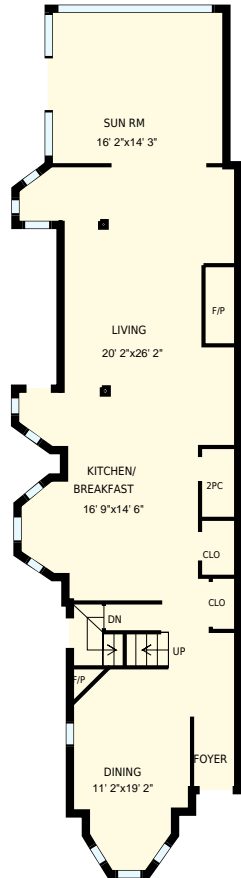




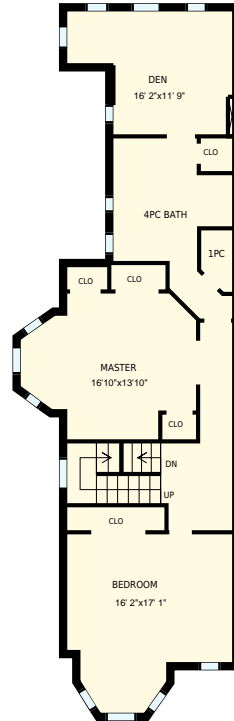
7 Parkview Ave, Toronto, ON

Total Exterior Area Above Grade 3176 sq ft



Main floor

Exterior Area 1496 sq ft



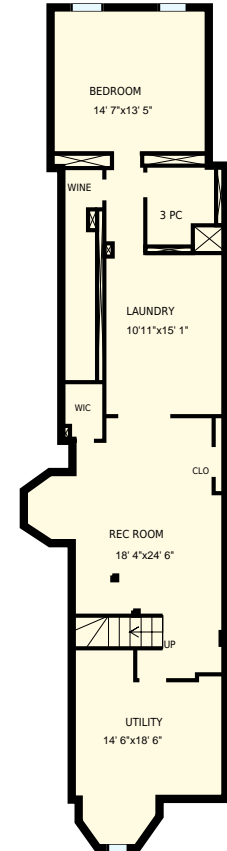
2nd floor

Exterior Area 1123 sq ft



3rd floor

Exterior Area 557 sq ft

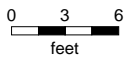
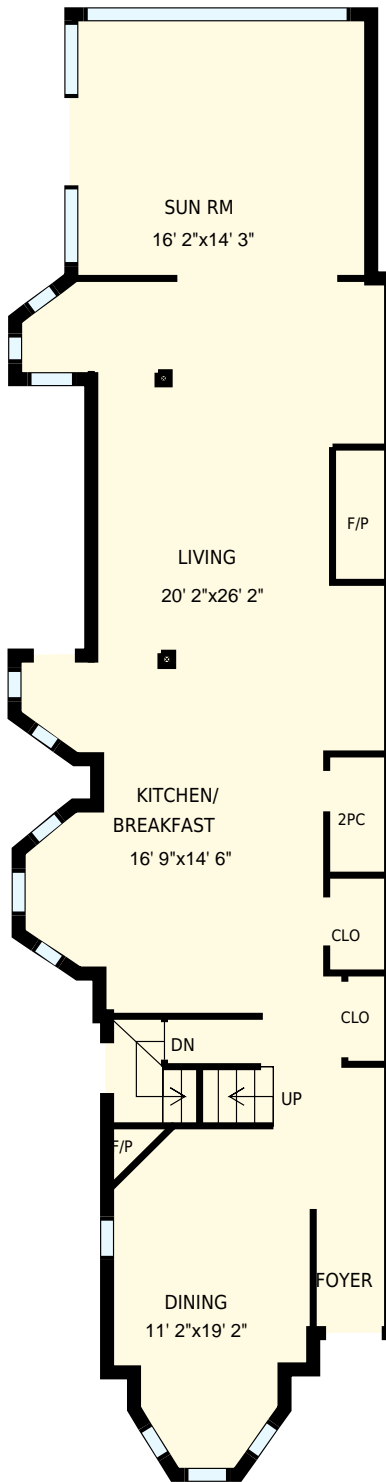


Basement

Exterior Area 1301 sq ft

White regions are excluded from total floor area. All room dimensions and floor areas must be considered approximate and are subject to independent verification. For method of measurement please see <https://youriguide.com/measure/>.

PREPARED FOR: Jen Tripp
Sales Representative
Homelife/Realty One Ltd., Brokerage

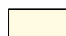


7 Parkview Ave, Toronto, ON

PREPARED FOR:
 Jen Tripp
 Sales Representative
 Homelife/Realty One Ltd., Brokerage

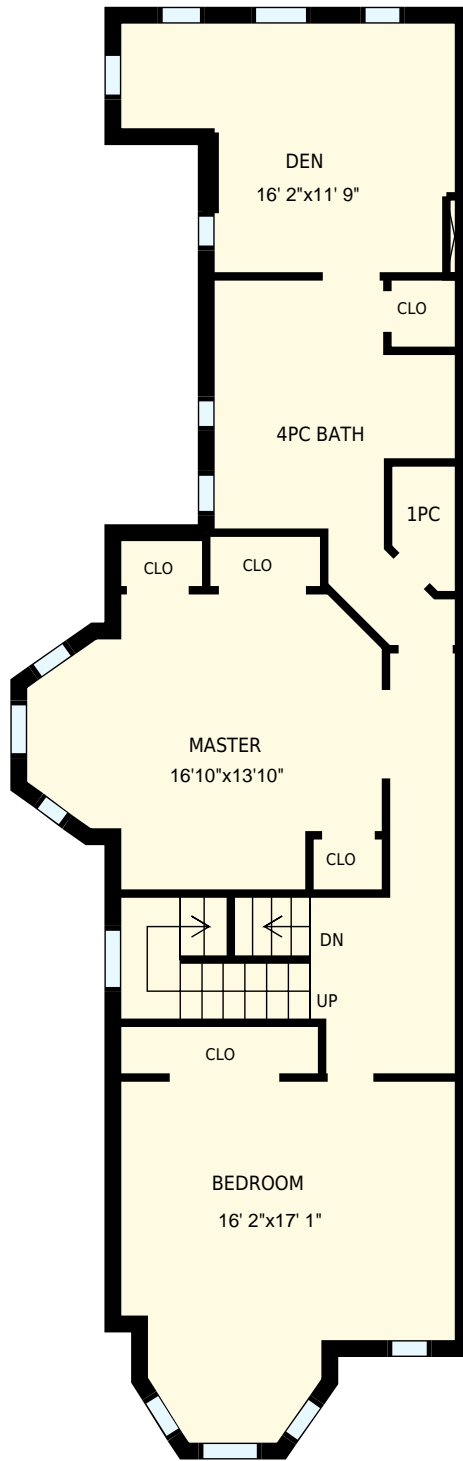
Main floor

Interior Area 1322 sq ft
 Exterior Area 1496 sq ft

 Included Area

PREPARED:
 Sep, 2016

White regions are excluded from total floor area. All room dimensions and floor areas must be considered approximate and are subject to independent verification. For method of measurement please see <https://youriguide.com/measure/>.

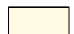


7 Parkview Ave, Toronto, ON

PREPARED FOR:
 Jen Tripp
 Sales Representative
 Homelife/Realty One Ltd., Brokerage

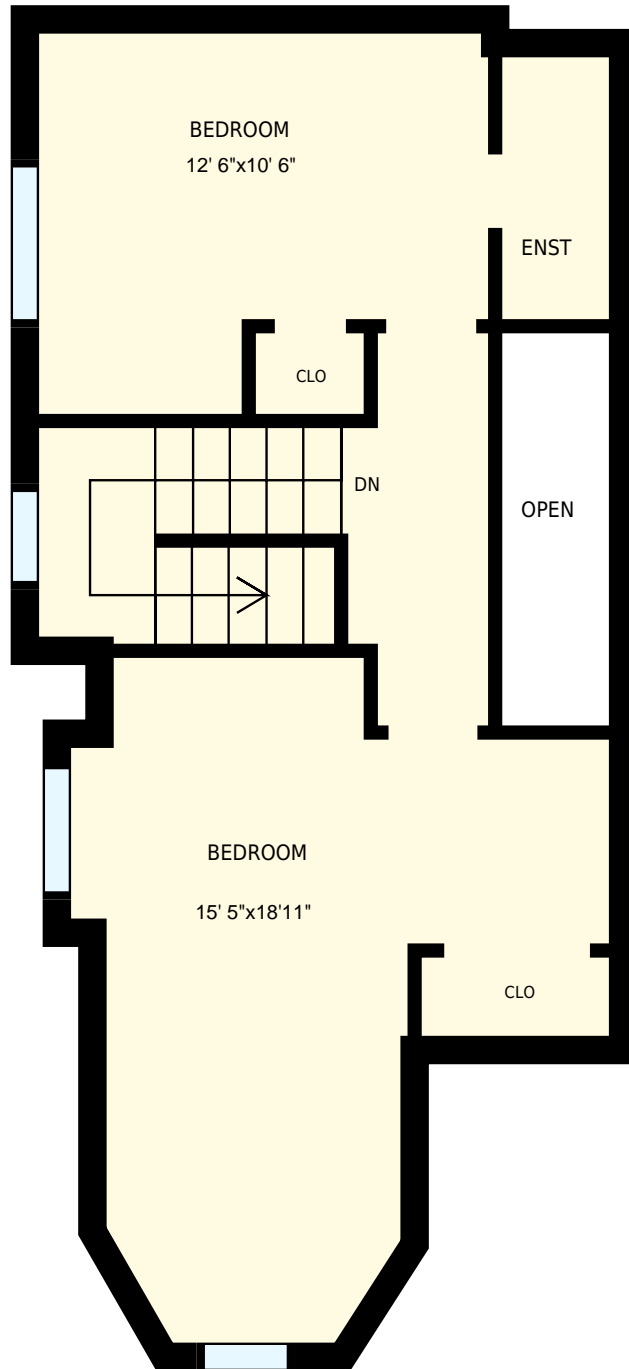
2nd floor

Interior Area 977 sq ft
 Exterior Area 1123 sq ft

 Included Area

PREPARED:
 Sep, 2016

White regions are excluded from total floor area. All room dimensions and floor areas must be considered approximate and are subject to independent verification. For method of measurement please see <https://youriguide.com/measure/>.

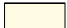


7 Parkview Ave, Toronto, ON

PREPARED FOR:
 Jen Tripp
 Sales Representative
 Homelife/Realty One Ltd., Brokerage

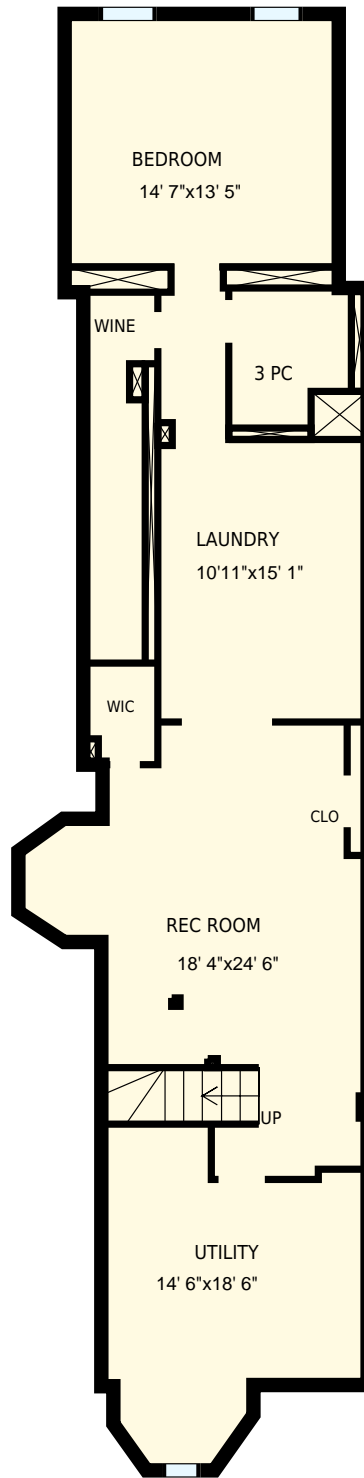
3rd floor

Interior Area 465 sq ft
 Exterior Area 557 sq ft

 Included Area

PREPARED:
 Sep, 2016

White regions are excluded from total floor area. All room dimensions and floor areas must be considered approximate and are subject to independent verification. For method of measurement please see <https://youriguide.com/measure/>.




7 Parkview Ave, Toronto, ON

PREPARED FOR:
Jen Tripp
Sales Representative
Homelife/Realty One Ltd., Brokerage

Basement

Interior Area 1141 sq ft
Exterior Area 1301 sq ft

 Included Area

PREPARED:
Sep, 2016

White regions are excluded from total floor area. All room dimensions and floor areas must be considered approximate and are subject to independent verification. For method of measurement please see <https://youriguide.com/measure/>.